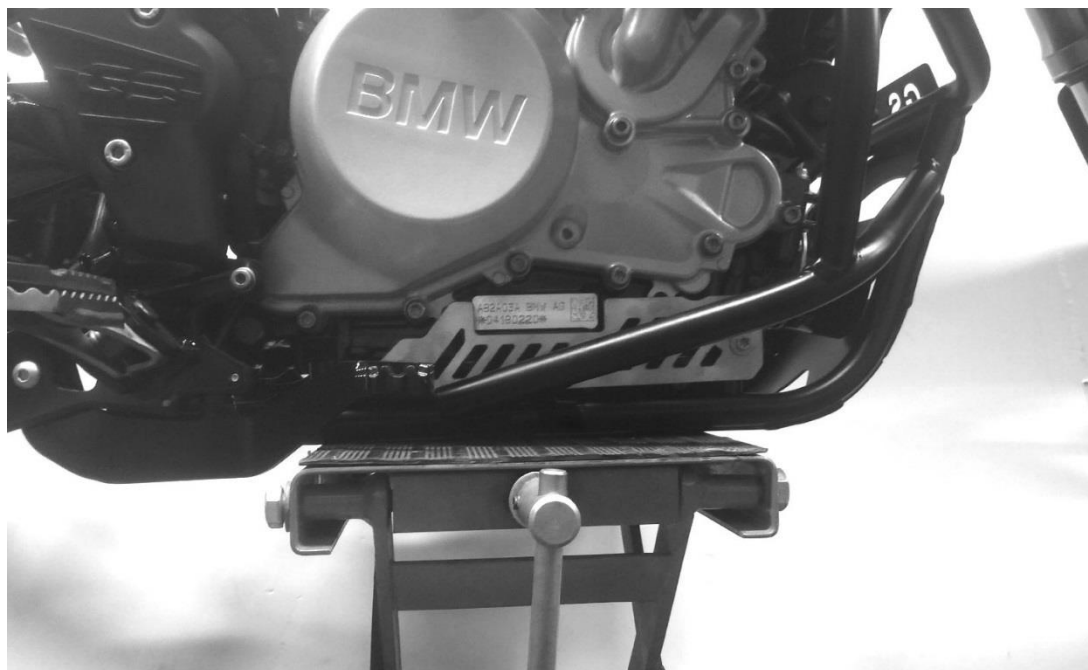


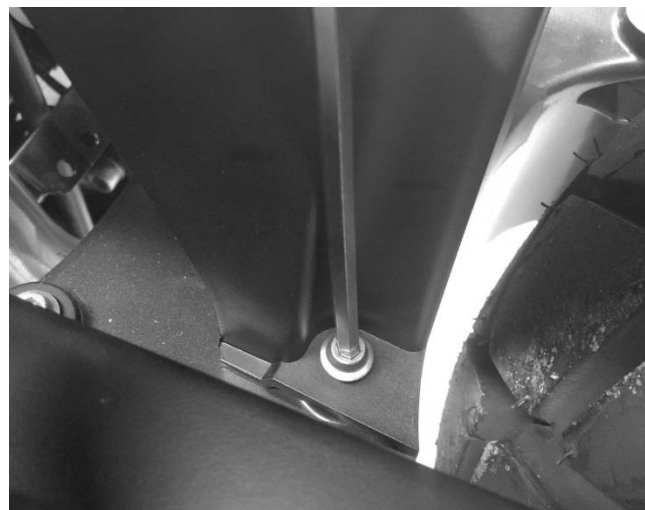
BMW G310GS LEVEL 2 TRACTIVE SHOCK INSTRUCTIONS V3

Level 2 Tractive shock Tools needed:

- 5mm Allen key
- 8mm Allen key
- Grease



1. Support bike with stand under engine so that rear wheel is suspended off the floor.



2. Remove right side plastic panel. Remove plastic shock shroud.



3. Undo and remove lower M10 shock bolt, then remove upper M10 bolt, whilst supporting shock. Remove OEM shock.



4. Insert new Tractive shock into top mount, make sure the orange adjuster at the top is facing to the left, with remote canister at the bottom on the right. Apply grease to upper M10 bolt and gently insert and tighten lightly, do not fully tighten.



5. Insert lower M10 bolt and gently tighten. Replace plastic shock shroud, if it fouls the remote canister it is possible to trim the plastic to clear the shock parts.
6. Tighten both upper and lower M10 bolts and replace plastic side panel.